



Provides a complete line of professional, cutting edge technology services.

We currently serve companies in five western states;  
Utah, Idaho, Wyoming, Colorado, Arizona and Nevada.

*Our line of professional services includes:*



*Vibration Data Analysis*



*Hydrostatic Testing*



*PRV Certification*



**PdM** Professionals  
and Consultants LLC

*Our services also includes:*



*Valve Greasing*



*Thermal Imaging*

*Pump Jack Servicing*





**Professionals  
and Consultants llc**

# Introducing Ground Penetrating Radar “GPR”

# What are the Benefits of Ground Penetrating Radar (GPR)

**Non-Destructive:** Frequency waves inflict absolutely no damage on the subsurface, environment or surrounding people.

**Disturbance-Free:** Makes little noise and doesn't bother surrounding people during use.

**Easily Deployed:** Multiple size options that are user friendly, so it can be stored, moved and utilized almost anywhere with few limitations.

**Upgrade To Previous Methods:** Similar to having a test trench or boring along the whole length of the project without the unnecessary digging.

**Eliminates Waste:** Points out areas to test pit or sample bore rather than using the SWAG method, minimizing useless or misleading data.



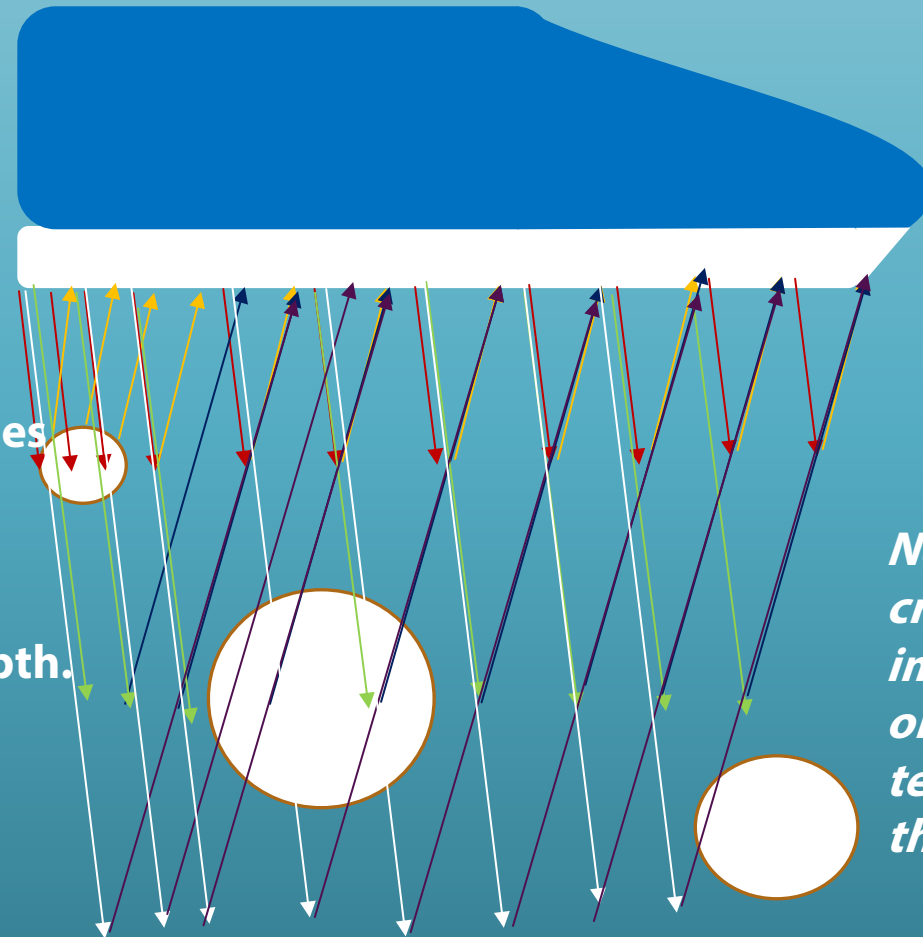
# A Quantum Leap in Field Maneuverability



# A Quantum Leap in Data Acquisition

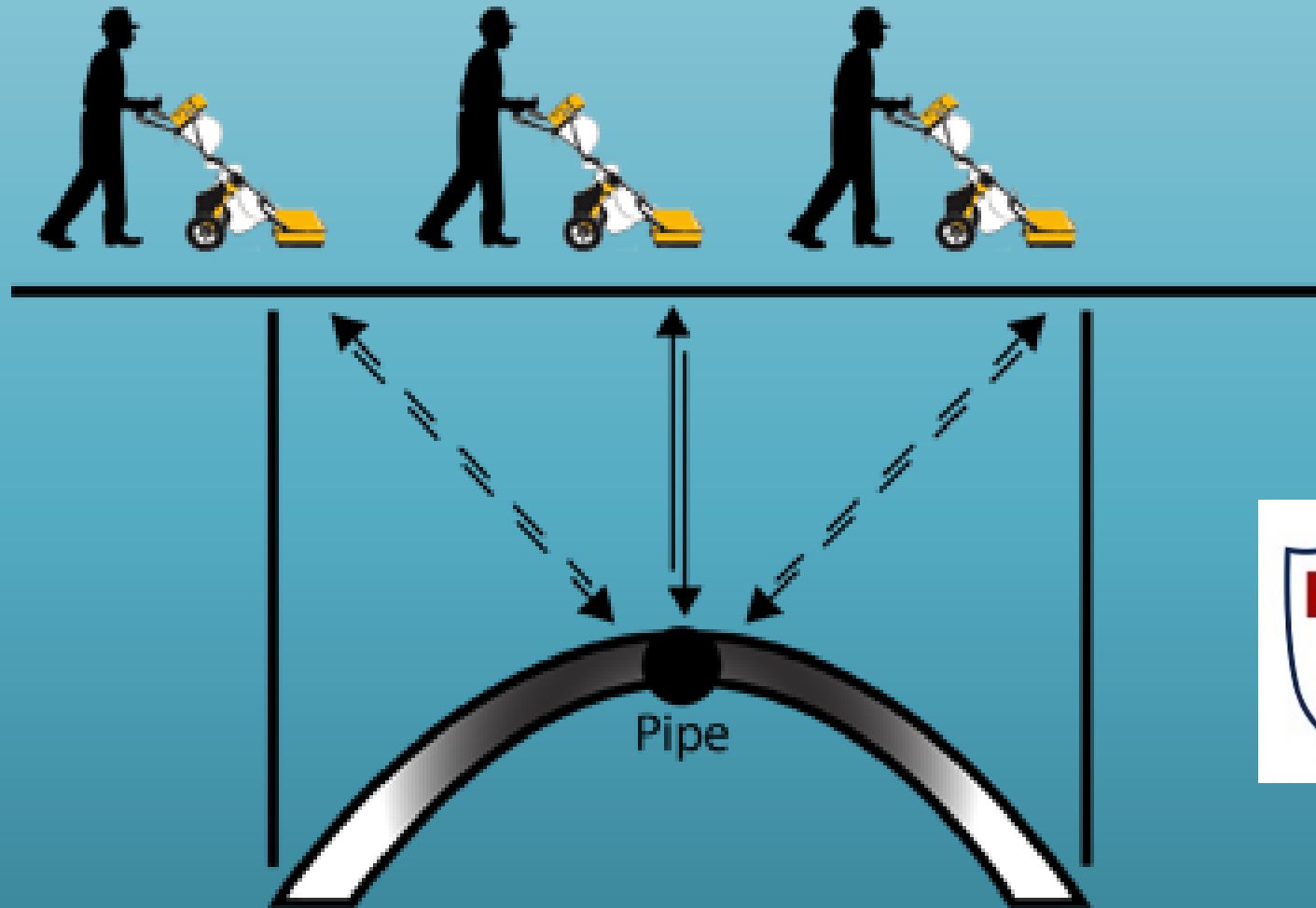


**Stepped Ultra Wideband Pulses** combine the advantages of pulse radar and stepped frequency radar to offer unsurpassed resolution & depth.



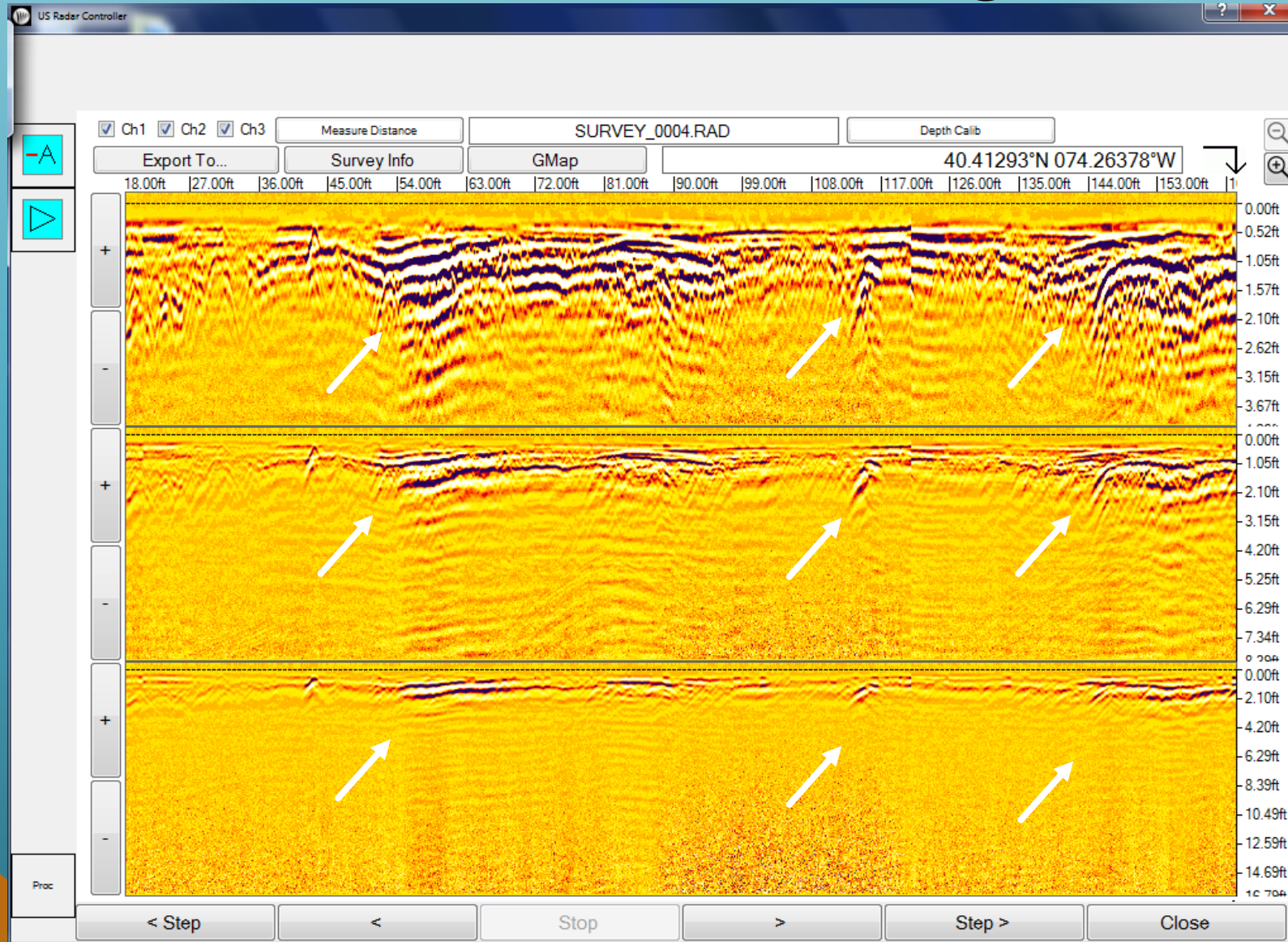
*New Direct RF sampling technology creates clearer, easier to understand images than previously possible with older radar technologies. All these technologies work transparently behind the scenes*

# How It Works





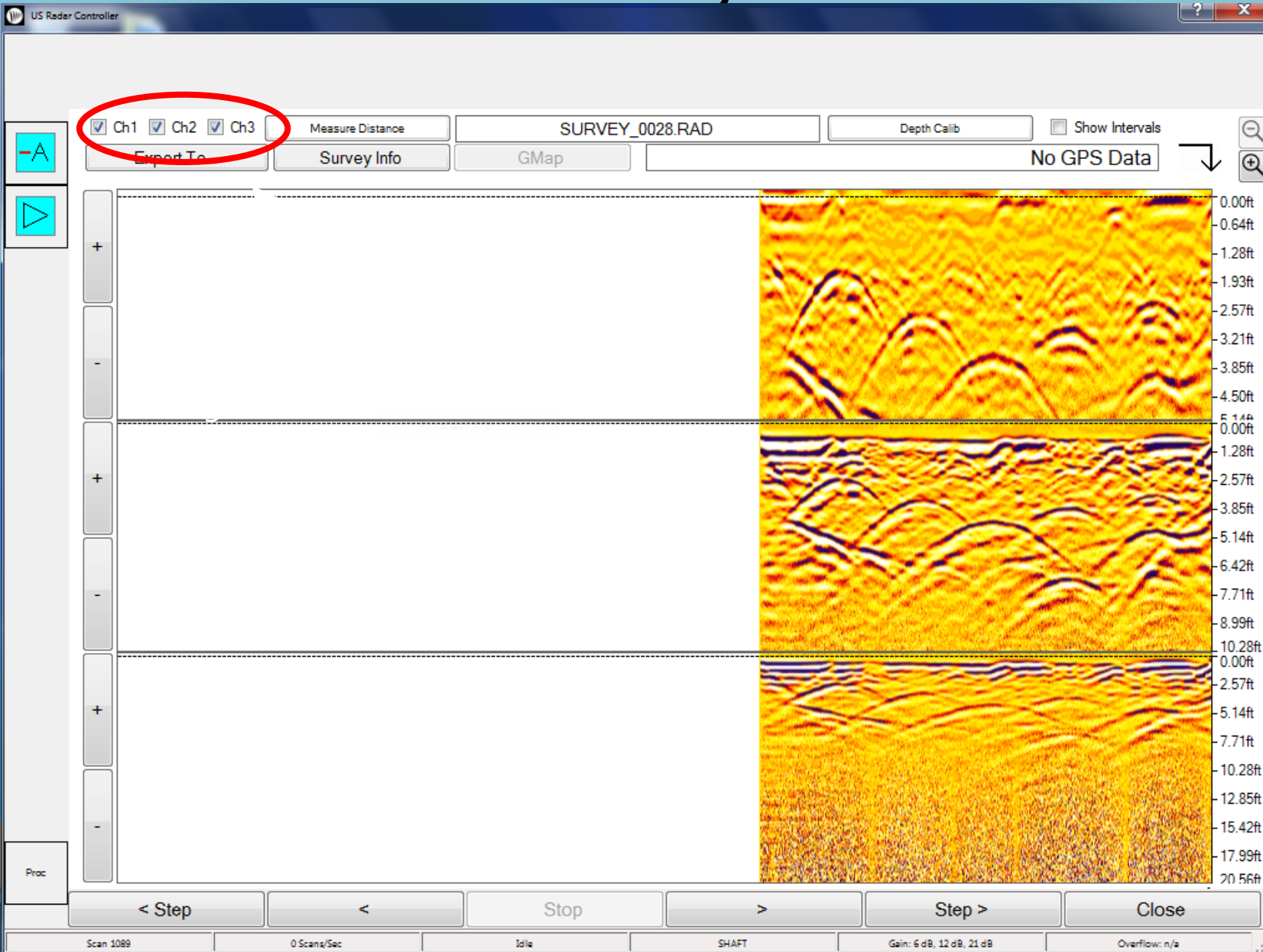
# A Quantum Leap In Detecting the Slightest Clue to the Existence of a Target



The High Frequency Channel Picks Up the Slightest Disturbance

Leading the Operator to Potential Targets Throughout the Depth

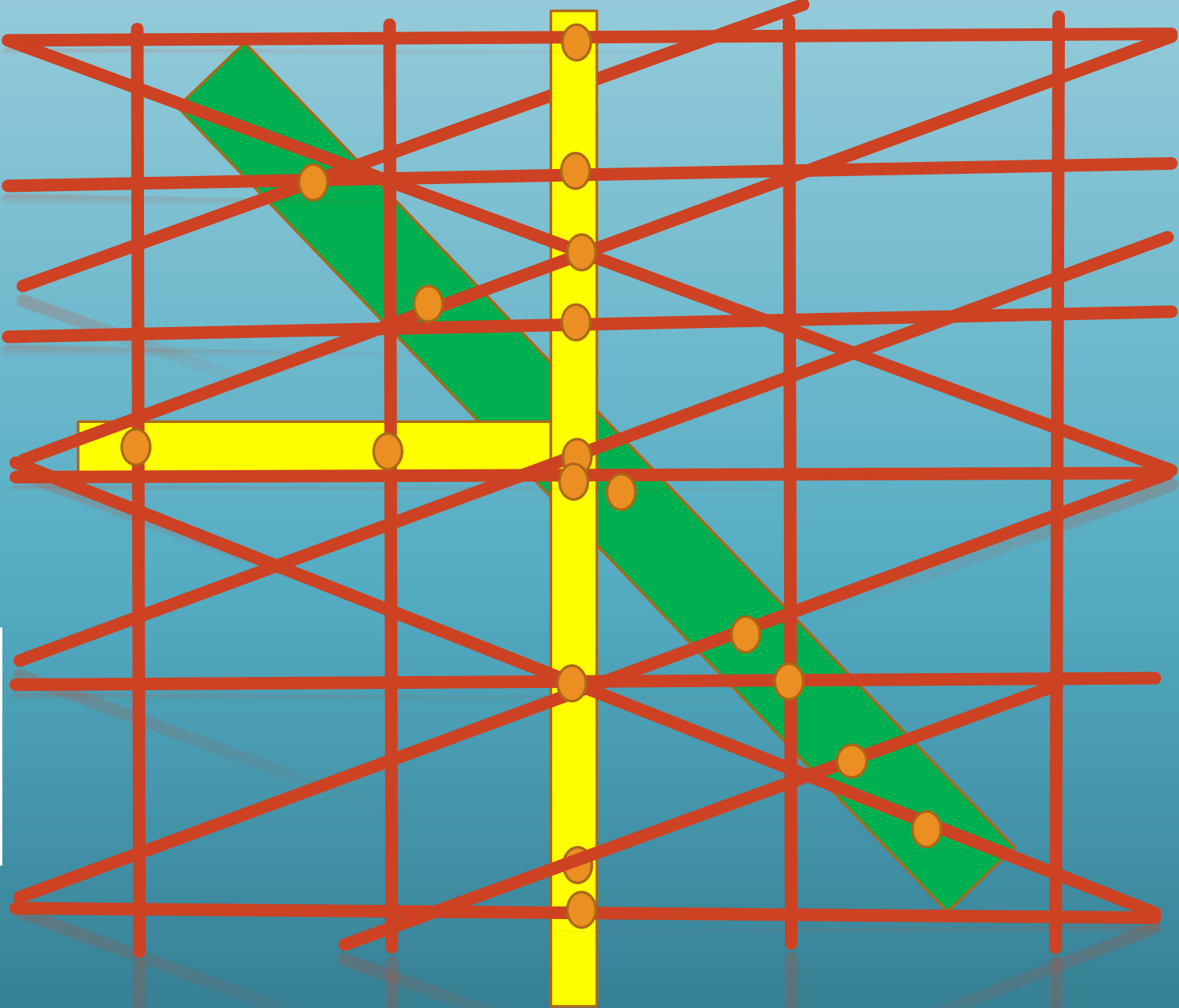
# Once a Potential Target Has Been Realized



We Can Start to  
"Zero In"



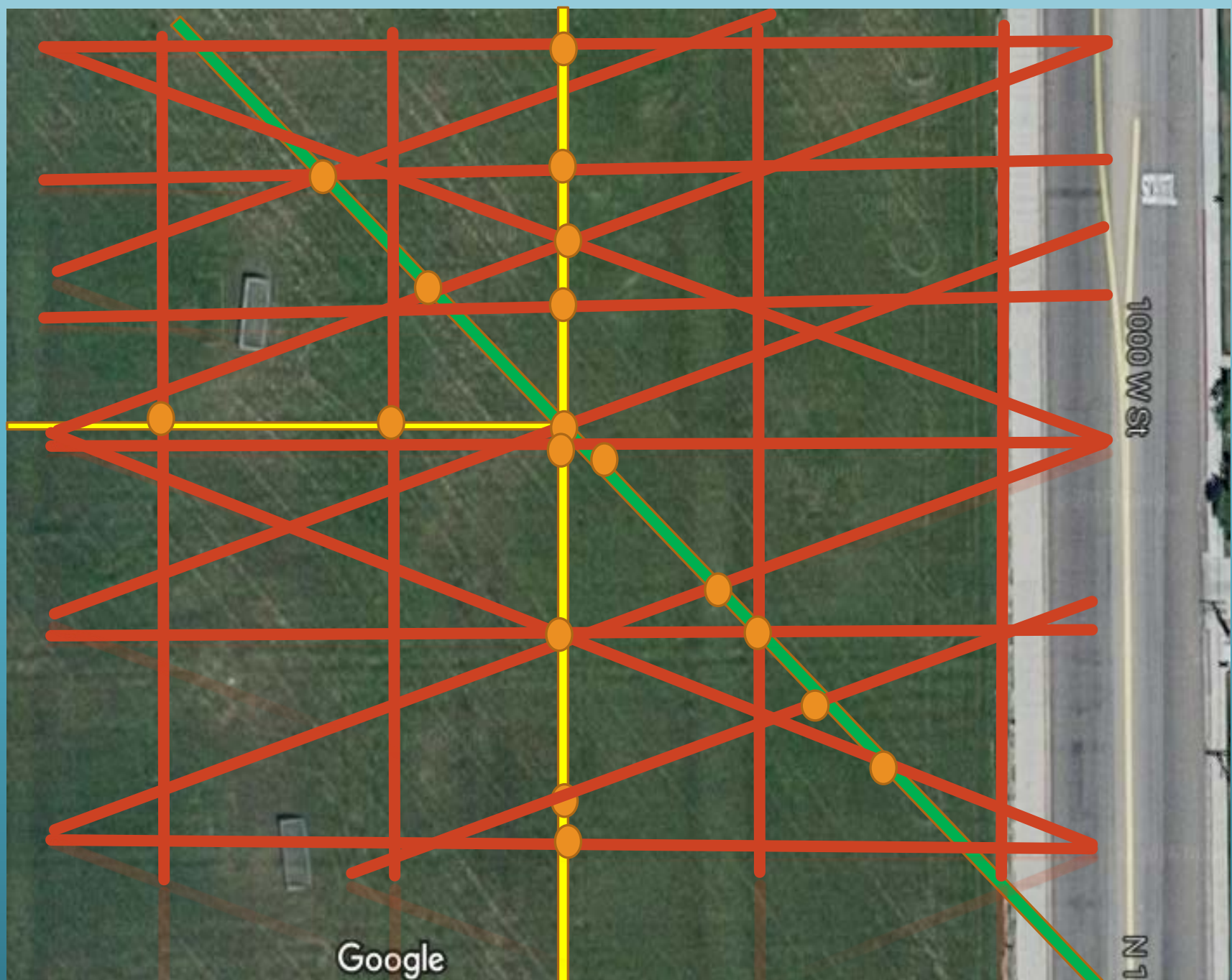
Typical  
Search  
Pattern





**PdM** Professionals  
and Consultants LLC

Typical Search  
Pattern can be  
integrated with  
google earth and  
show GPS  
locations of under  
ground utilities



# Great tools In Acquisition Mode

The screenshot displays the 'US Radar Controller' software interface in acquisition mode. The window title is 'US Radar Controller'. The main interface is divided into several sections:

- Top Panel:** Contains channel selection checkboxes for 'Ch1', 'Ch2', and 'Ch3'. A 'Measure Distance' button is highlighted with a red circle. Other controls include 'SURVEY\_0028.RAD', 'Depth Calib', 'Show Intervals', 'Export To...', 'Survey info', 'GMap', and 'No GPS Data'.
- Left Panel:** Features a vertical toolbar with icons for waveform and play, and zoom controls (+ and -) for the depth scan.
- Center Panel:** Displays the logo for 'PdM Professionals and Consultants llc'.
- Right Panel:** Shows three stacked depth scan plots. The top plot has a white line indicating a measurement. Depth scales are provided in feet on the right side of each plot, ranging from 0.00ft to 20.56ft.
- Bottom Panel:** Includes a 'Proc' button and navigation controls: '< Step', '<', 'Stop', '>', 'Step >', and 'Close'.
- Status Bar:** At the very bottom, it shows 'Scan 1089', '0 Scans/Sec', 'Idle', 'SHAFT', 'Gain: 6 dB, 12 dB, 21 dB', and 'Overflow: n/a'.

# The Quantum Imager

