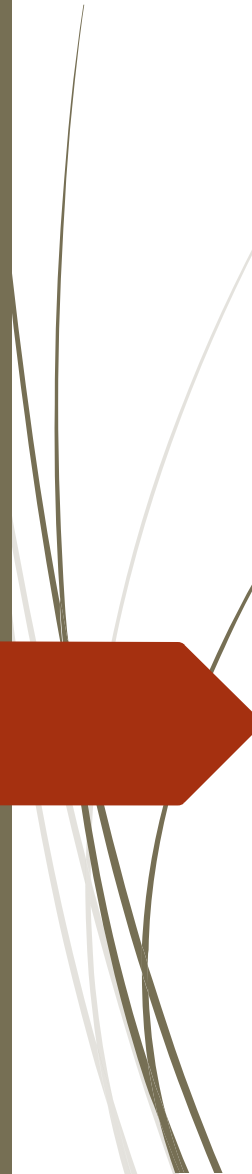


TWIN BUTTES
Enterprises LLC



Purpose

- To identify and promote the construction of power generation facilities in Southeastern Idaho.
- To complete pre-work for this construction
- To market the pre-work package to a large company to bring the plan to fruition.

Background

- **Twin Butte Enterprises has been working on a project to build major power generation facilities in Butte county for the past several years.**

Major Contributors

- Bob Skinner – 38 years US Navy including 8 years on Nuclear Submarines, 5 years commercial nuclear power experience, over 26 years at the Idaho National Laboratory – currently retired.
- Reed Nord – 40 years of local south east Idaho agricultural and real estate experience including many multi-million dollar projects. Also a county assessor and senior appraisal officer.
- Ted Sorensen – A recognized Engineering Specialist for Hydro Electric Projects in the U.S. and the world.
- We have hired several professional organizations and people to help with our studies and certifications

Milestones Achieved

- Secured option agreement on a parcel of land for building and operation of power generation facilities.
- Secured option agreement on water for operation of power generation facilities.
- A large portion of the environmental background research is completed.
- Seismic background research completed.

Milestones Achieved – Cont.

- ▶ Compared and contrasted current local and regional power consumption against projected power growth.
- ▶ Initial contact has been made with potential buyers.
- ▶ Transmission line feasibility studied.
- ▶ Researched viability of Butte county planning and zoning requirements.

Milestones Achieved – Cont.

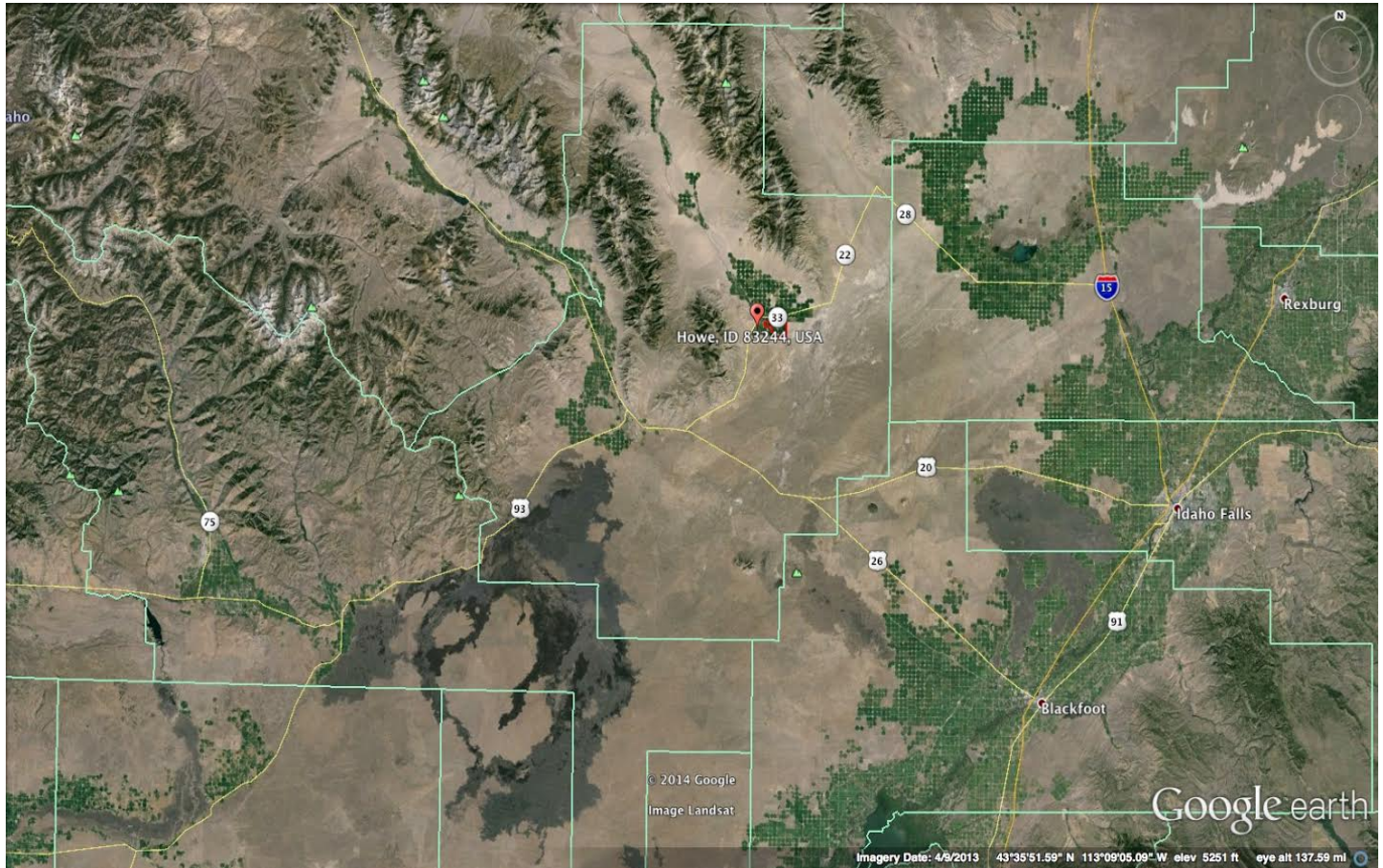
- ▶ Sage grouse issues evaluated.
- ▶ Secured resolution from the Butte County Commissioners to support construction and operation.
- ▶ Rocky Mountain Environmental certified amount of water available for use by the facility.

Ask your self.....

Why not here?

Why not now?

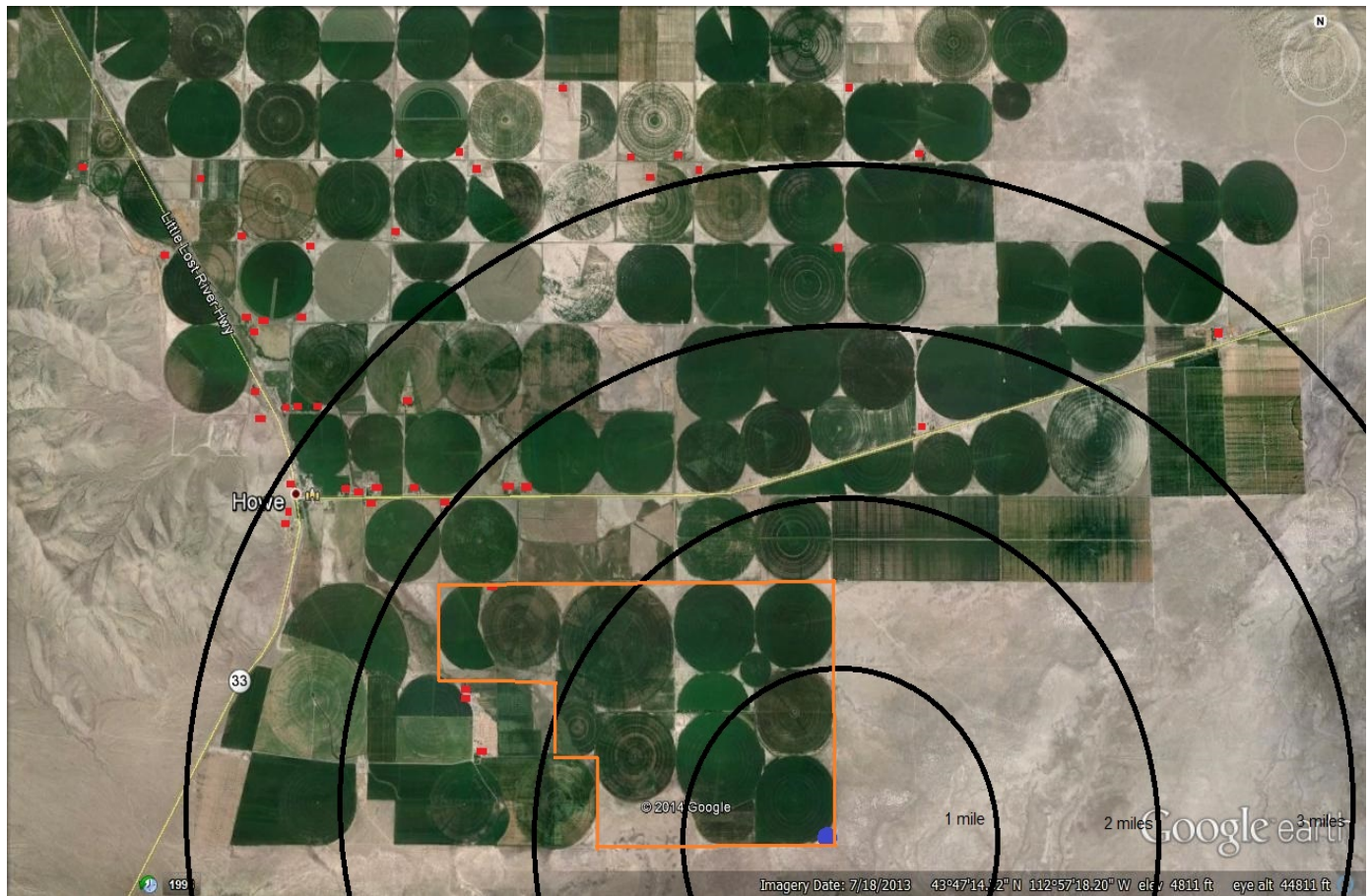
Regional Map



Area Map



Local Map



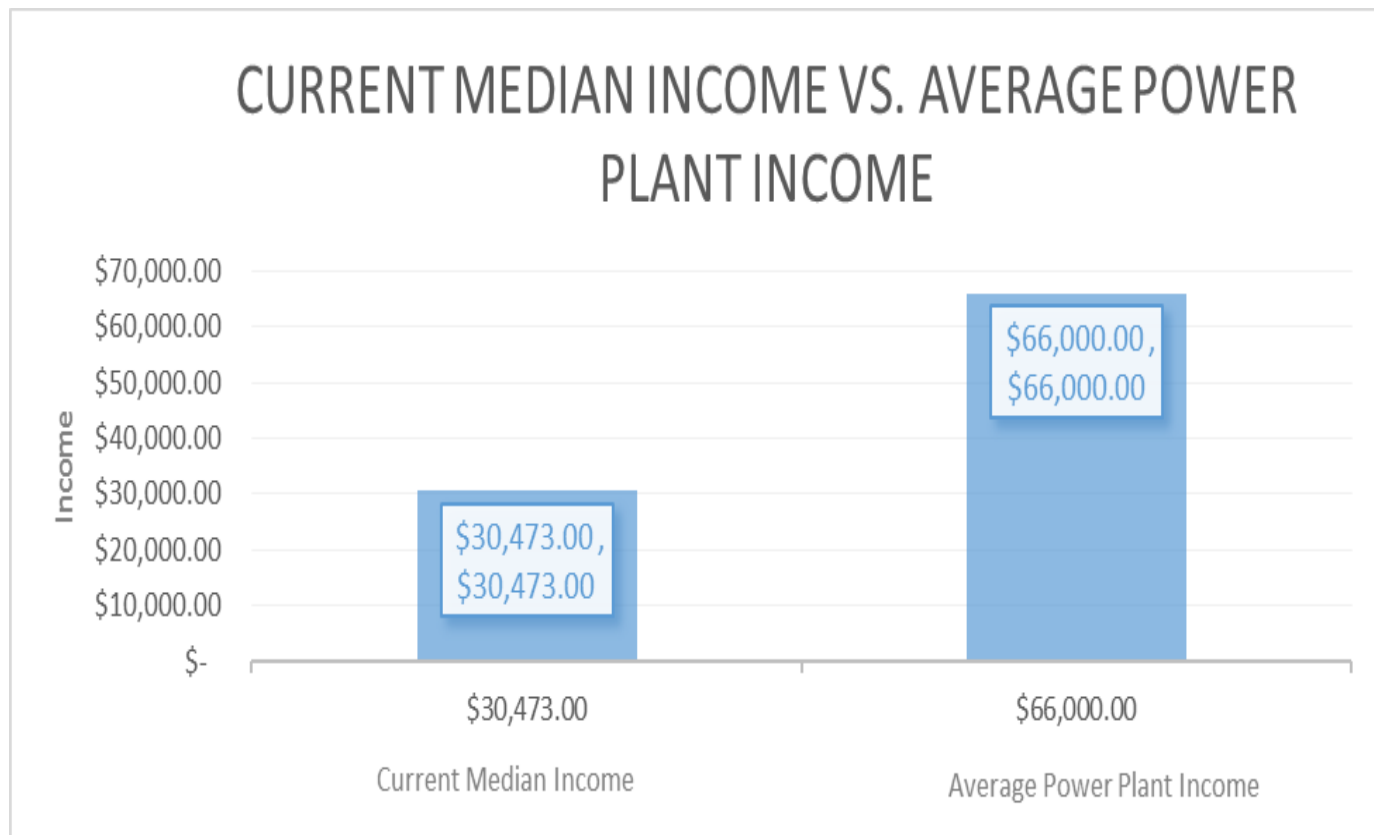
From the Location



Our research shows.....

- **This is one of the best locations for a power generation facility in the Western United States! Especially, with two sides of the property adjacent to the INL.**

Economic Impacts - Income



Economic Impacts – Income Cont.

- ▶ Based on an average estimated 2000 employees required to staff a 2000 megawatt power generation facility.

2000 employees X average income of \$66,000.00

=

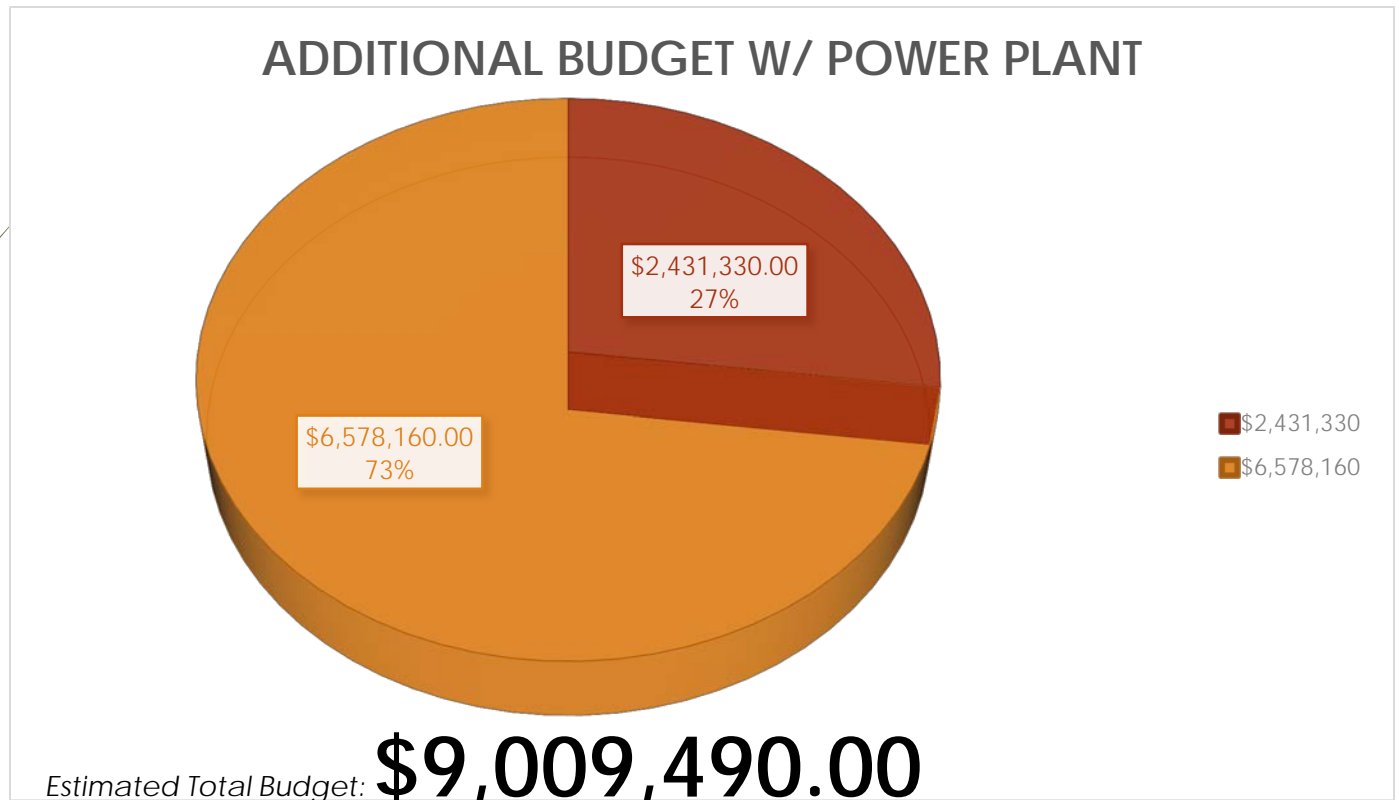
\$132,000,000.00

(Estimated Annual Area Income)

Economic Impacts – Perpetual Income

- ➔ **Non-government power generation facilities would generate perpetual tax revenue for Idaho.**

Economic Impacts – Butte County Tax on Power Generation



Upcoming Milestones

- Complete Twin Butte Enterprises business plan.
- Market the power generating facilities package as whole to an interested company or parties who will bring this plan to fruition.
- To promote economic growth both locally and at the state level.

Factoids about Nuclear Power in South East Idaho

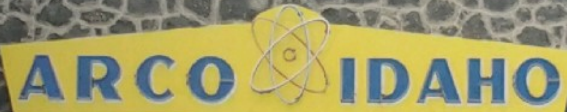
- Throughout the lifetime of the INL, there have been more than 50 nuclear reactors built by various companies for testing.
- Area residents are familiar with the INL and its nuclear research.
- Area residents have the expertise to operate a commercial power reactor which enables local people the opportunity to work at such a facility.

Factoids about Nuclear Power in South East Idaho Cont.

- INL is the lead lab for the Department of Energy's nuclear programs.
- Arco was the first community in the world ever to be lit by electricity generated by nuclear power. This occurred on July 17, 1955, powered by Argonne National Laboratory's BORAX-III reactor .
- A yearly highlight in Arco is its annual "Atomic Days" celebration.

Factoids about Nuclear Power in South East Idaho Cont.

- ▶ South East Idaho has a rich history in construction and operation of many nuclear facilities.
- ▶ The Partnership for Science and Technology pro nuclear group is located in Idaho Falls.
- ▶ The largest local section of the American Nuclear Society is located in Idaho Falls.



ARCO IDAHO

**FIRST CITY IN THE WORLD
TO BE LIT BY ATOMIC POWER**
ELEVATION 5320



Ask yourself again

Why not here?

Why not now?

Contact Info

Mail Address:

2300 N Yellowstone Hwy

Idaho Falls Id 83401

Phone:

208-589-7301 or 208-757-7434

Email Address:

twinbuttesllc@gmail.com

Question and Answer Period

➤ Your Questions